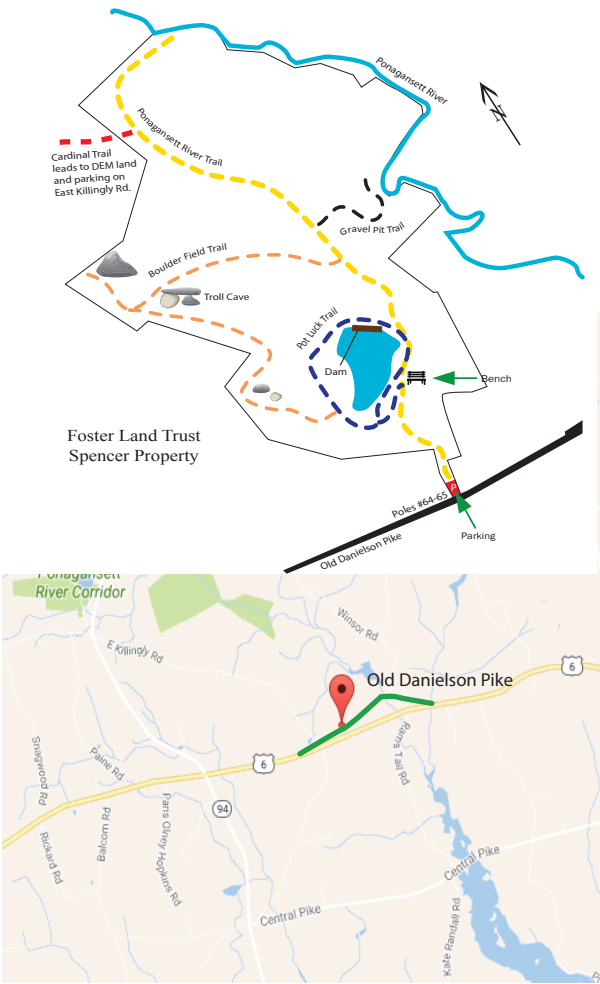


THE SPENCER PROPERTY

The Foster Land Trust's Spencer Property comprises 155 acres of woodland along the Ponagansett River Corridor in the north central portion of Foster.

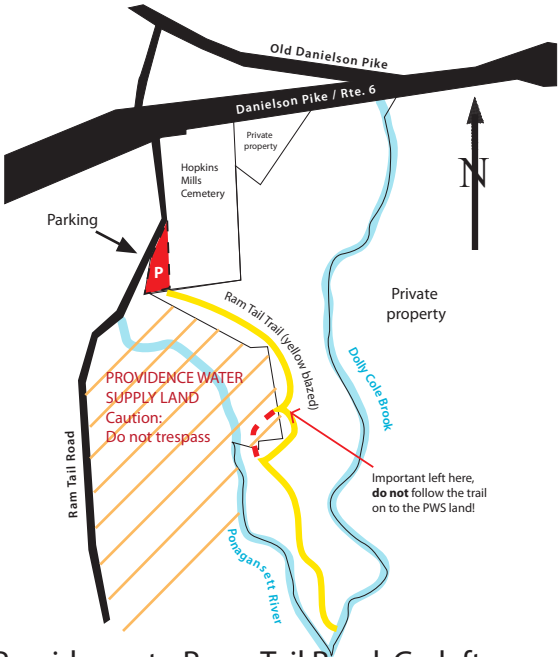
ACCESS: From Danielson Pike (Route 6), take Anthony Road to Old Danielson Pike. Turn east on Old Danielson Pike and near Pole 64, which is approximately one-quarter mile on the north side is a parking area at the entrance to the property.



THE HOPKINS PROPERTY

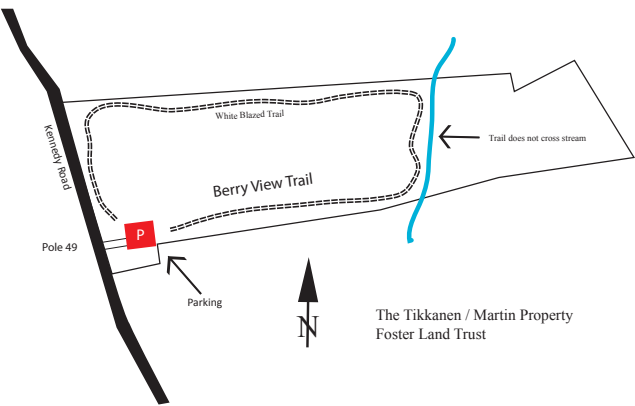
This 24-acre property is accessible from the Hopkins Mills Cemetery parking area on the north end of Rams Tail Road. From the cemetery, walk south down the hill east of Rams Tail Road. A 1/2-mile, yellow-blazed trail starts at the tree line at the bottom of the hill. After about a 1/4 mile, watch for the trail to take a left on a single track up and over a hill. (If you miss this turn, you will be trespassing on Providence Water Supply Board land.) The correct trail will take you to the old McLaughlin Bridge. On the way back, don't forget to watch for that right hand turn over the hill.

ACCESS: Take Route 6 (Danielson Pike) west from Providence to Rams Tail Road. Go left and park beside the Hopkins Cemetery



THE TIKKANEN / MARTIN PROPERTY

To enter, follow a gravel driveway across from Pole #49. Please stay to the left along the edge of the field to protect the grasses. To enter from the east gate, the trail starts on an old cart road that leads to the rear of the property. The cart road ends and becomes a single path trail at the back of the property. It then heads north for a few hundred yards and then turns west heading back to the field and the parking area. The white-blazed trail ends in the north field. This is an easy ability trail, mostly level with some light grades. Note that some area of the trail can be wet in the early spring. The forest is a mix of pine, spruce, and assorted hardwoods. Trail length is approximately one mile.



ACCESS: Take Route 6 west to Cucumber Hill Road at the state line and go left. Continue to the intersection with South Killingly Road and turn right. Kennedy Road will be the first left. To enter the parking area, follow a gravel driveway across from Pole 49 for about 100 feet. You can then access the trail through the east gate or the north gate.

THE HAYFIELD PROPERTY

This 109 acre area is the former Hayfield Family farm. Three blazed trails, the yellow-blazed Hayfield Trail, the blue-blazed Pasture Trail, and the aptly named orange-blazed Rocky Trail follow gently rolling land with many stone walls crisscrossing the trails. Several fields on the property are maintained as wildlife habitat for ground nesting birds. The southern edge runs along the Ponagansett River where the remains of a sawmill, barns, a viaduct that directed water from the river to the mill, and granite bridge abutments can be seen.

ACCESS: Take Route 101 (Hartford Pike) west from Providence. Left on Winsor Road. A parking area is at Pole 54.

